

Erfahrung ▲ Fortschritt ▲ Service



Erfahrung ▲ Fortschritt ▲ Service



Technical Data

Blizzard 50 SLF P30P

Blizzard 70 SLF P30P

Cutter capacity:

50 L

70 L

Rounds per minute:

- knife-shaft cutting

500 - 5000

500 - 5000

- knife-shaft mixing forward

50 - 500

50 - 500

- knife-shaft mixing reverse

50 - 500

50 - 500

- bowl

5 / 11 / 16

5 / 11 / 16

Automatic shut-off:

- temperature

*

*

- bowl

*

*

Motor performance:

- knife-shaft

11 KW, via
frequency inverter 15 KW
0,25 KW

22 KW, via
frequency inverter 22 KW
0,39 KW

- bowl

Connected load / main supply:

- cross-section

5 x 10 mm² Cu

5 x 25 mm² Cu

- fuse, delayed action

35 A

63 A

Weight in kg.

750

1300

Cutters for the Trade



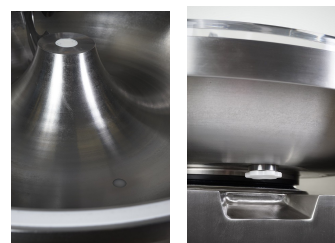
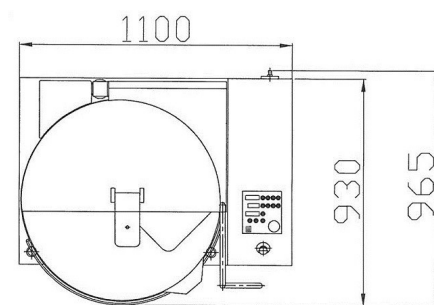
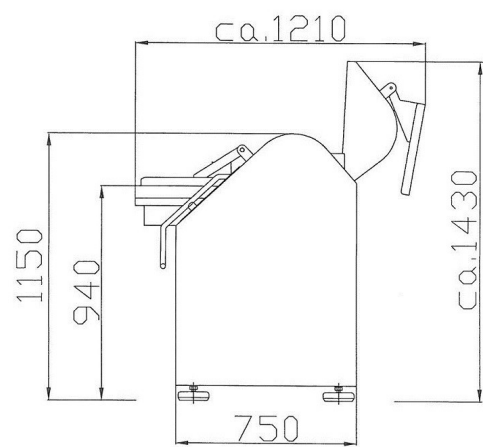
Düker-REX Fleischereimaschinen GmbH - Im Gewerbegebiet 17 - 63846 Laufach
Telefon: +49 (0) 6093 9932-190 - Fax: +49 (0) 6093 9932-194
E-Mail: info@dueker-rex.de - Internet: www.dueker-rex.de

DÜKER-REX Fleischereimaschinen GmbH
63846 Laufach **www.dueker-rex.de**

Blizzard 50 SLF P30P



- Machine housing, all surfaces stainless steel, matt finish
- knife-head with 6 knives, system Düker SDU
- optional: knife-head with 3 knives, system Düker SDS
- noise protection cover
- apron protection stainless steel
- knife-shaft with variable cutting speed
- continuous adjustment via potentiometer
- cutting speed 500-5000 RPM
- mixing forward / reverse 50-500 RPM
- 3 bowl speeds
- temperature shut-down and bowl shut-down
- anti-vibration feet
- control intirely integrated into machine housing
- power: 15 KW
- digital display for temperature, bowl and knife-shaft
- bowl stainless steel
- cutter bowl with water outlet
- lifter for bowl cover



Blizzard 70 SLF P30P



- Machine housing, all surfaces stainless steel, matt finish
- knife-head with 6 knives, system Düker
- optional: knife-head with 3 knives, system Düker SDS
- noise protection cover
- apron protection stainless steel
- knife-shaft with variable cutting speed
- continuous adjustment via potentiometer
- cutting speed 500-5000 RPM
- mixing forward / reverse 50-500 RPM
- 3 bowl speeds
- temperature shut-down and bowl shut-down
- anti-vibration feet
- control intirely integrated into machine housing
- power: 22 KW
- digital display for temperature, bowl and knife-shaft
- bowl stainless steel
- cutter bowl with water outlet
- lifter for bowl cover

